



BROKENMONKEYARTWORK:

MONKEY CRAFTS

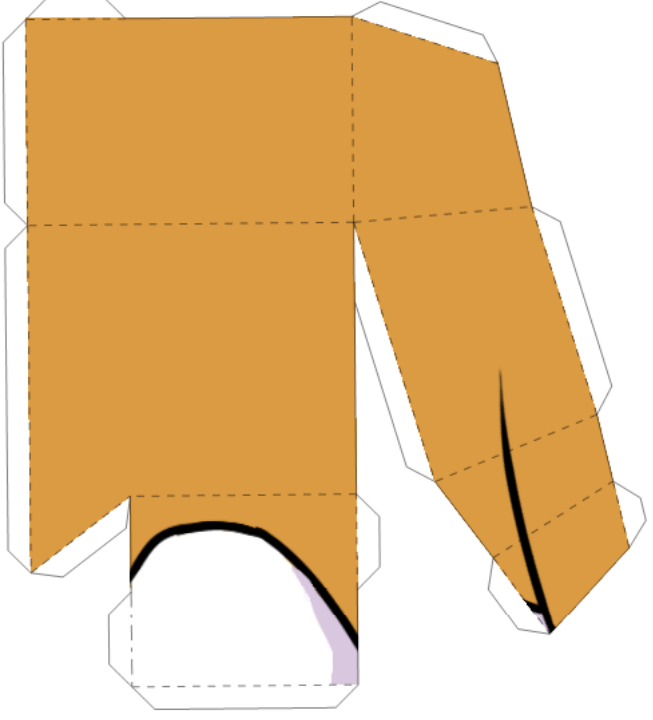
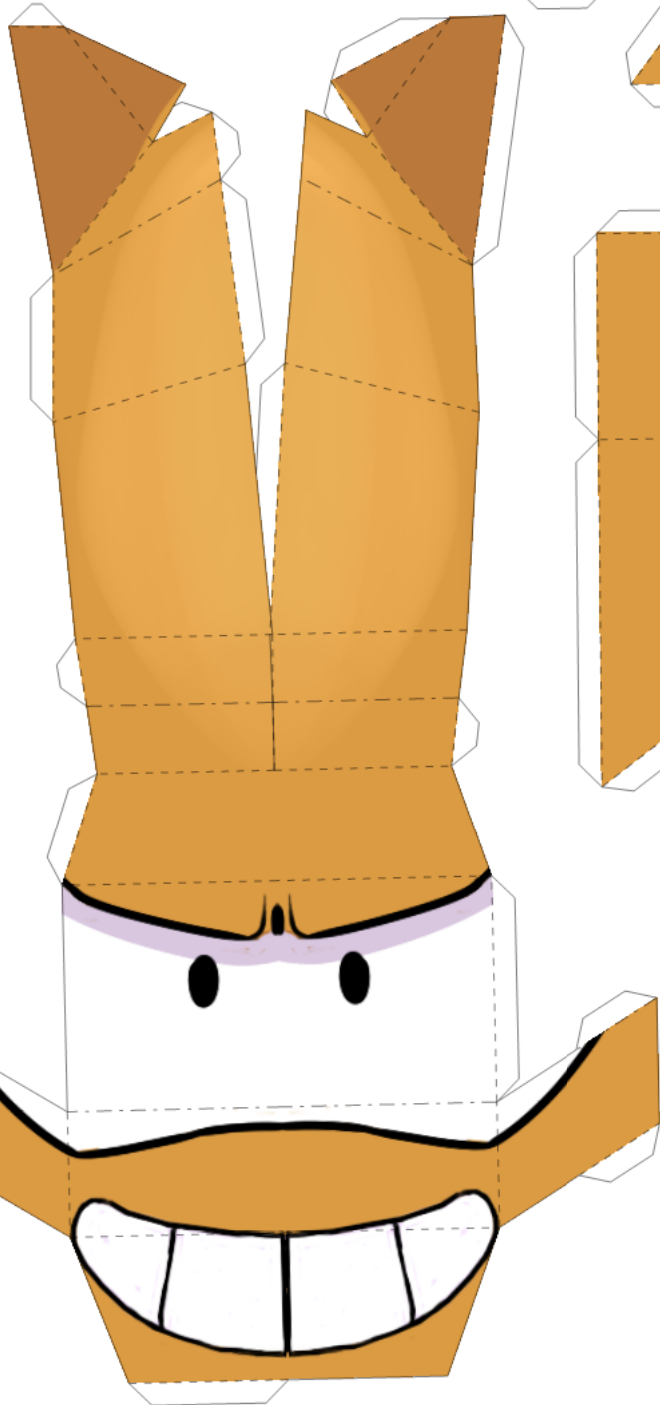
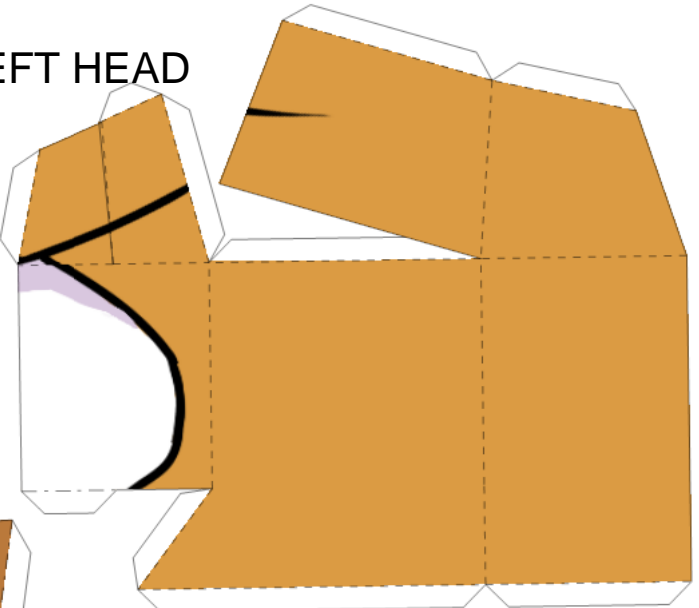


Model by: <https://www.deviantart.com/thebrokenmonkey>

Rodney from: <http://ravensdojo.com/>

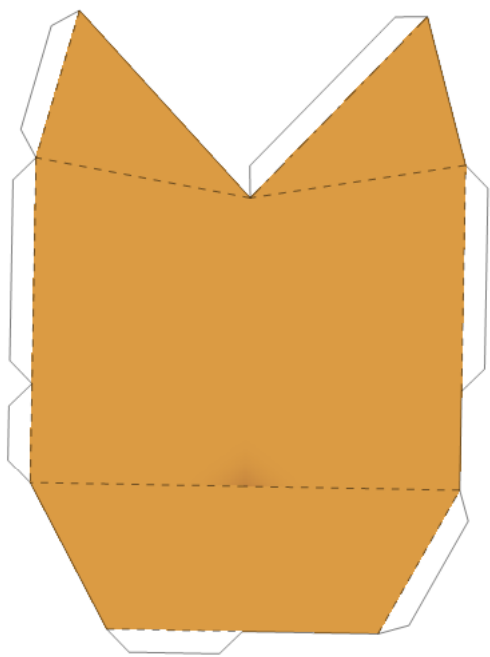
1/8 (row1 col1)

LEFT HEAD

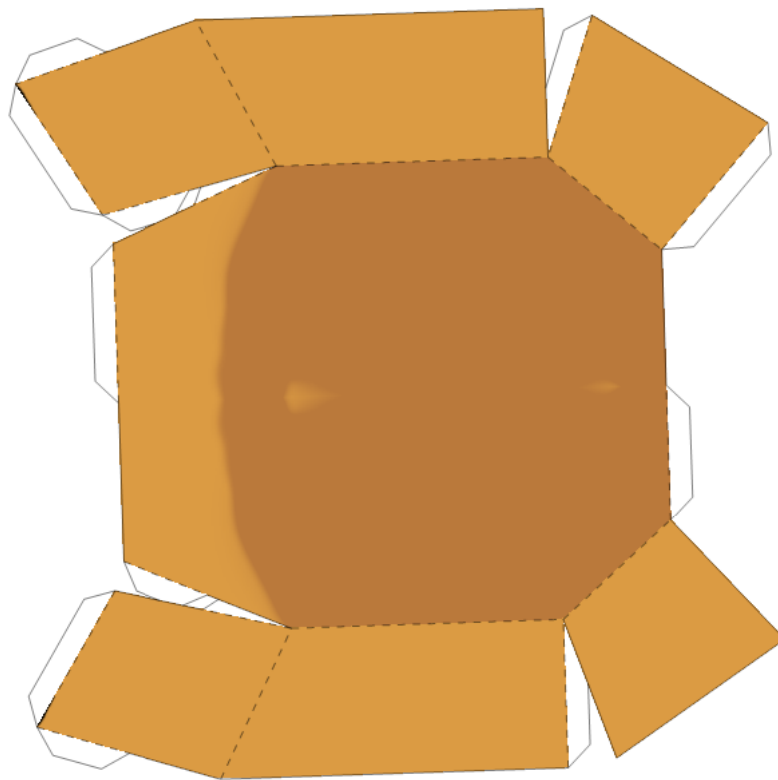


RIGHT FACE

FACE 2/8 (row1 col2)

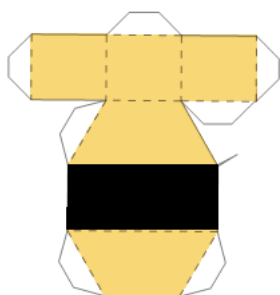


HEAD BACK

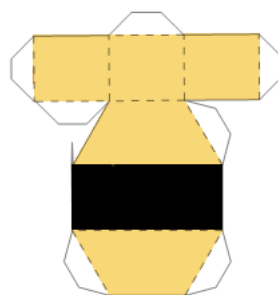


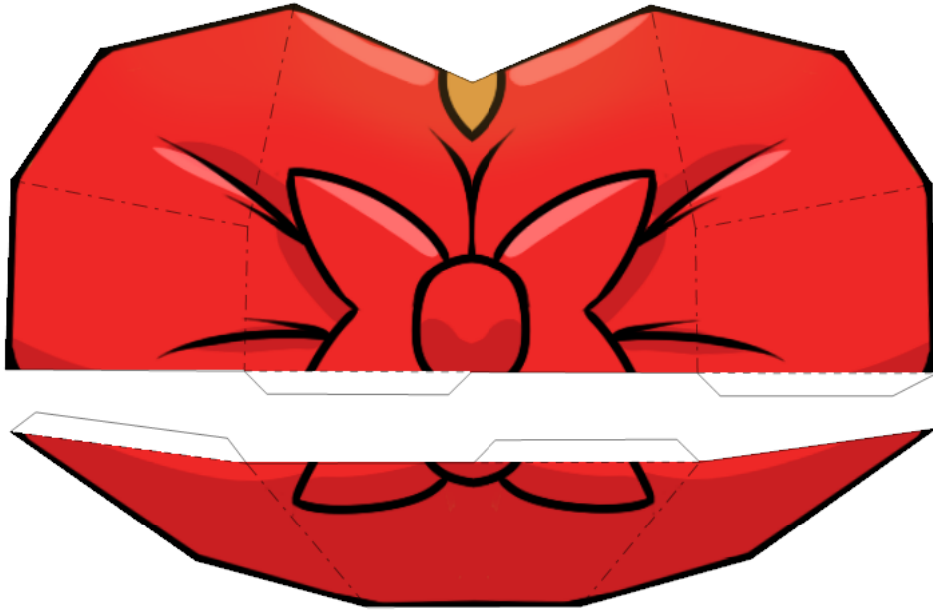
HEAD BOTTOM

LEFT EAR

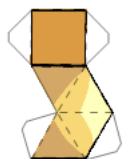
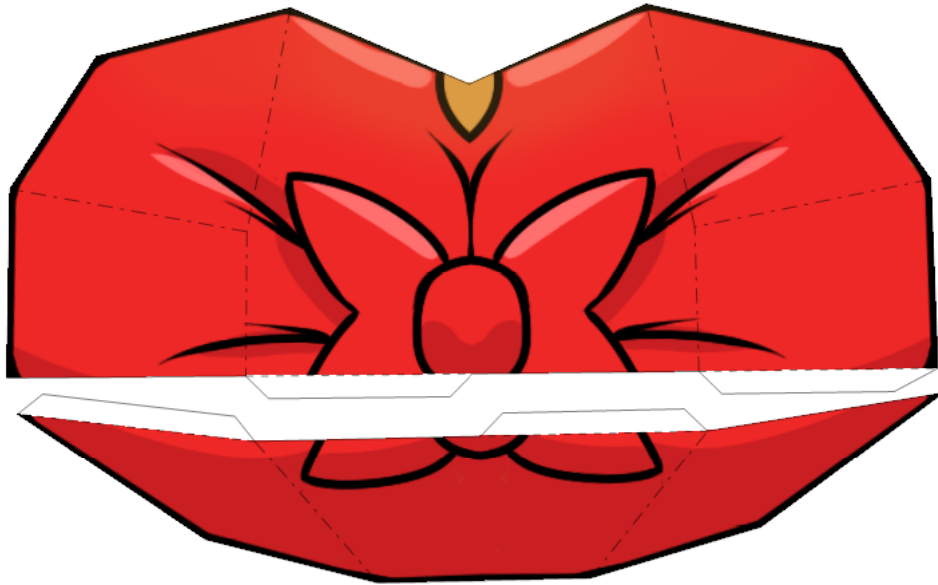


RIGHT EAR



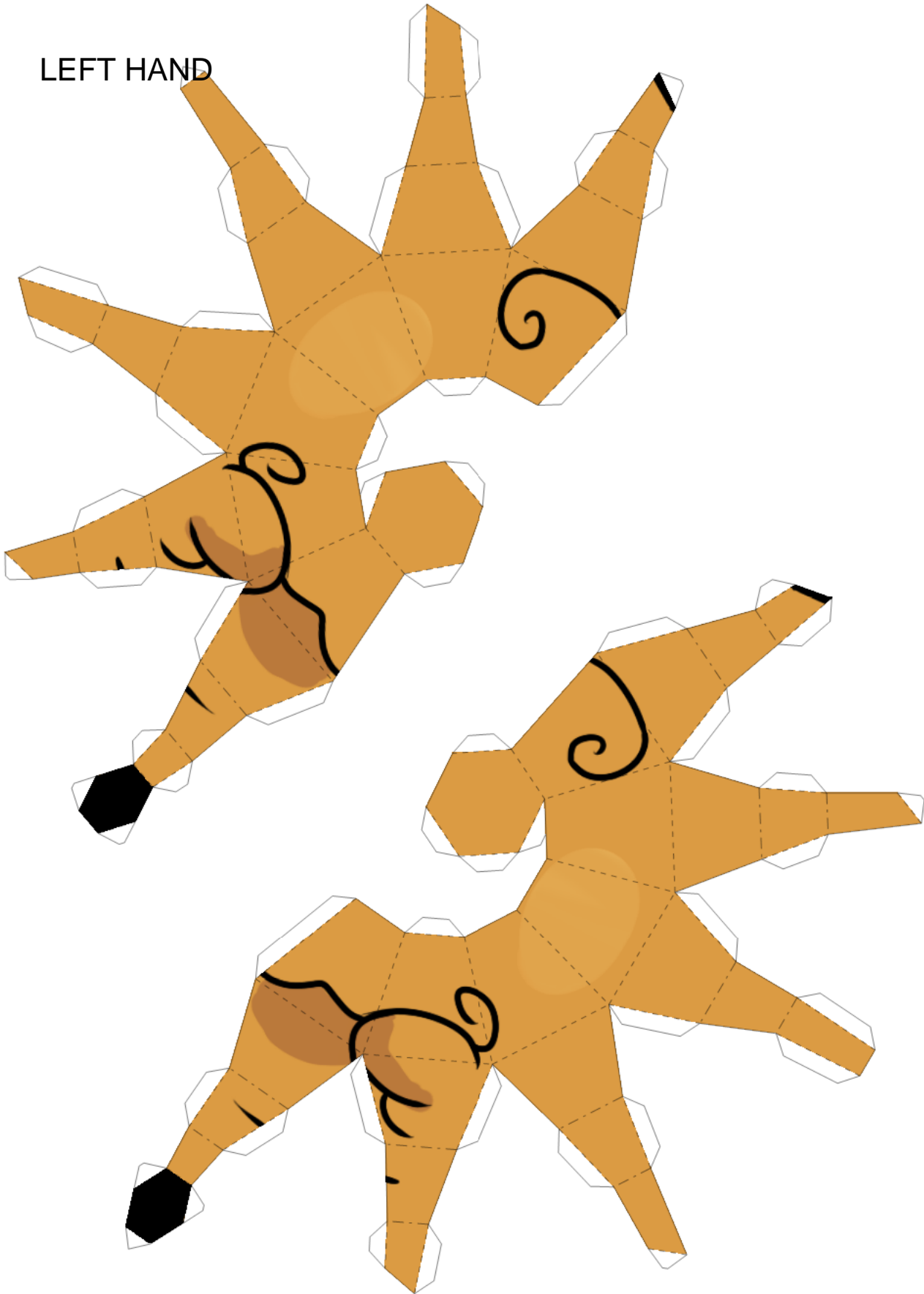


BOW TIE

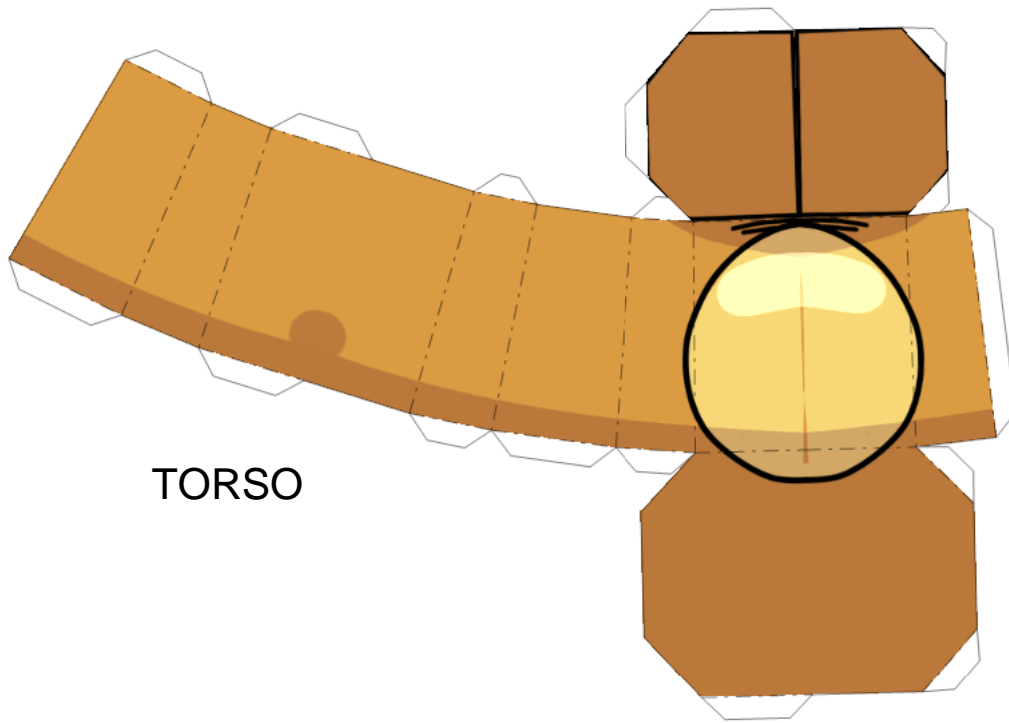


TAIL

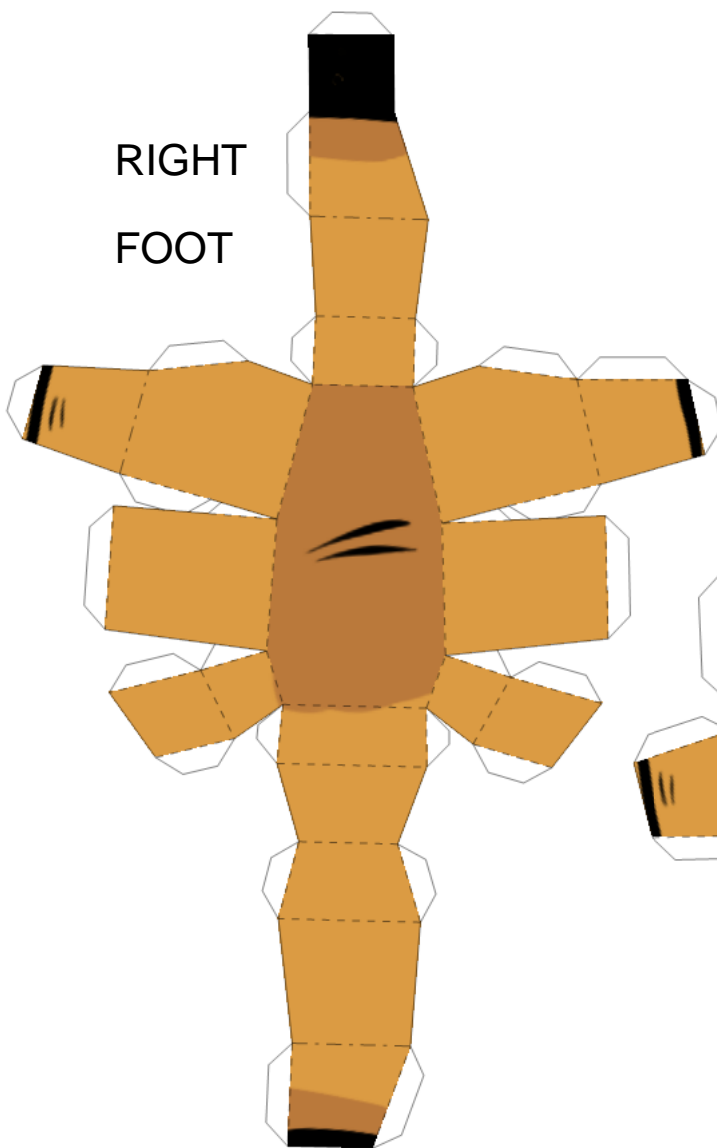
LEFT HAND



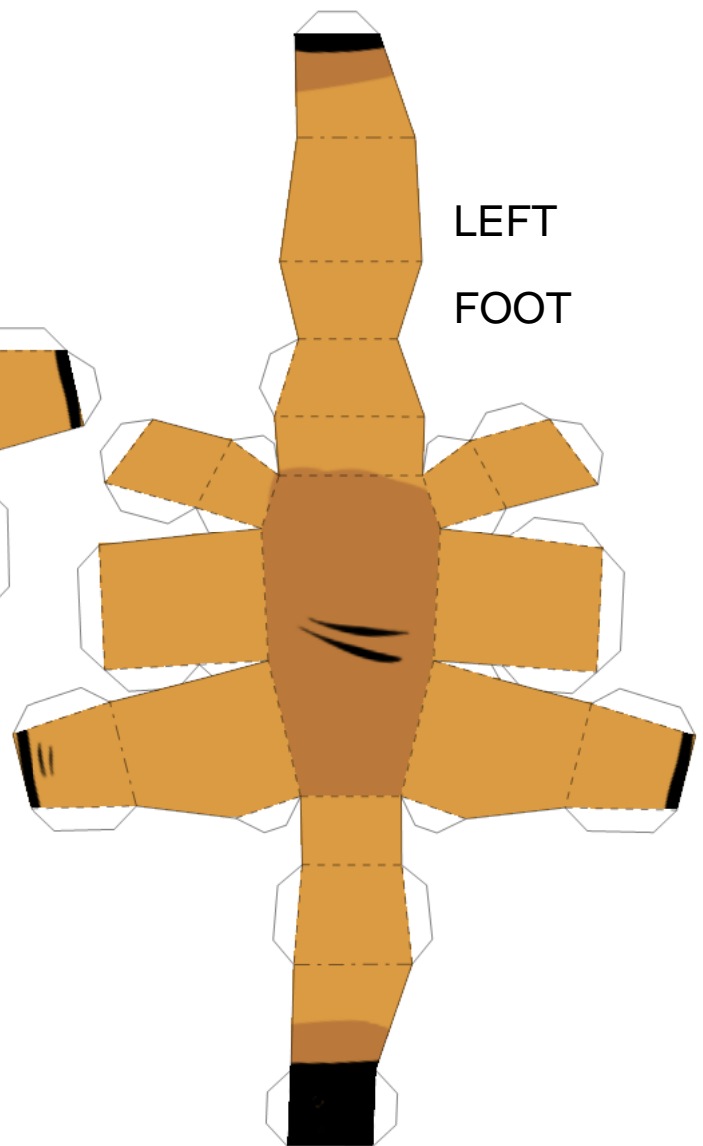
RIGHT HAND



TORSO



RIGHT
FOOT



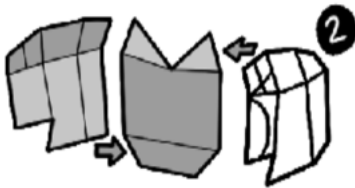
LEFT
FOOT

INSTRUCTIONS (Part 1)



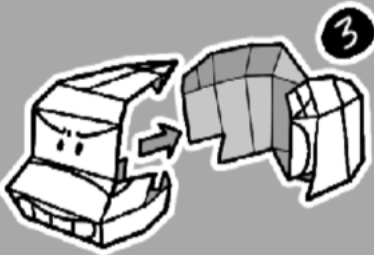
1

- Bind lashes on top of head
- Close the side tabs of the piece corresponding to the lower part of the head
- Connect both pieces connecting as shown in the figure



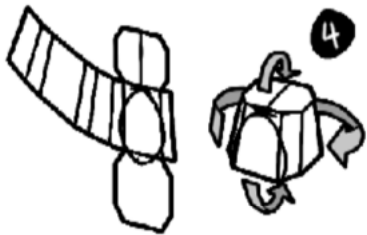
2

- Join the back parts of the side faces of the head with the back piece



3

- join the front part of one of the side faces with the front part of the head, in order to join the rest of the tabs moving in a circular way until everything is closed in one piece



4

- Join the tabs of the upper and lower faces with the faces of the sides in a circular way until the cylinder is closed



5

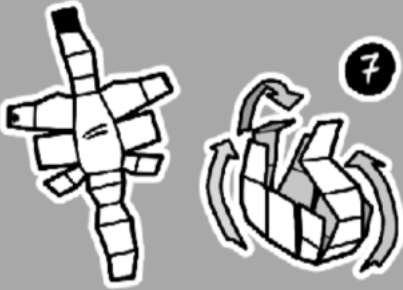
- Connect the upper part with the lower part, repeat the same action with the opposite part, exposing the face on the back part



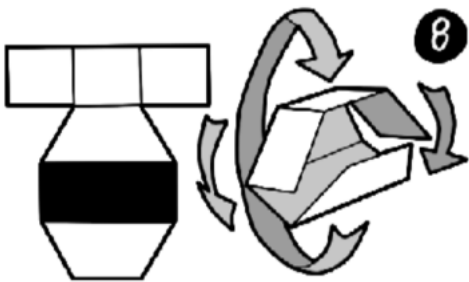
6

- Close the pieces by joining the tabs in a circular way (in the opposite way to how a banana is peeled).

INSTRUCTIONS (Part 2)



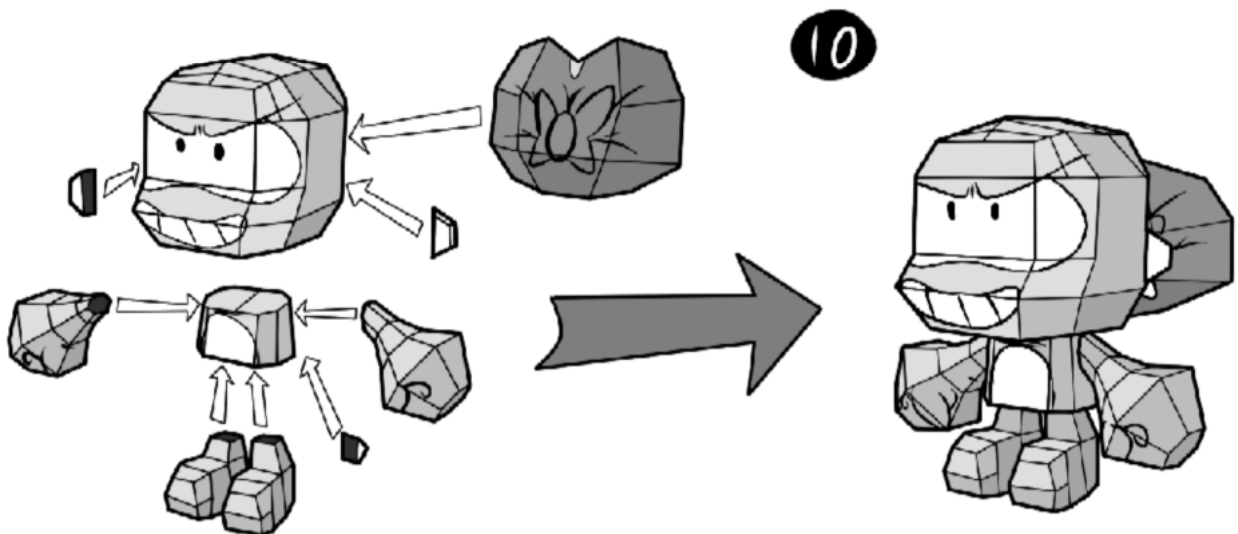
join the contiguous tabs from the central face until the figure is closed



rotate the larger faces cylindrically and close with the remaining square faces



Form a pyramid with triangular faces and close it at the bottom with the square face



Join the pieces as shown in the illustration above